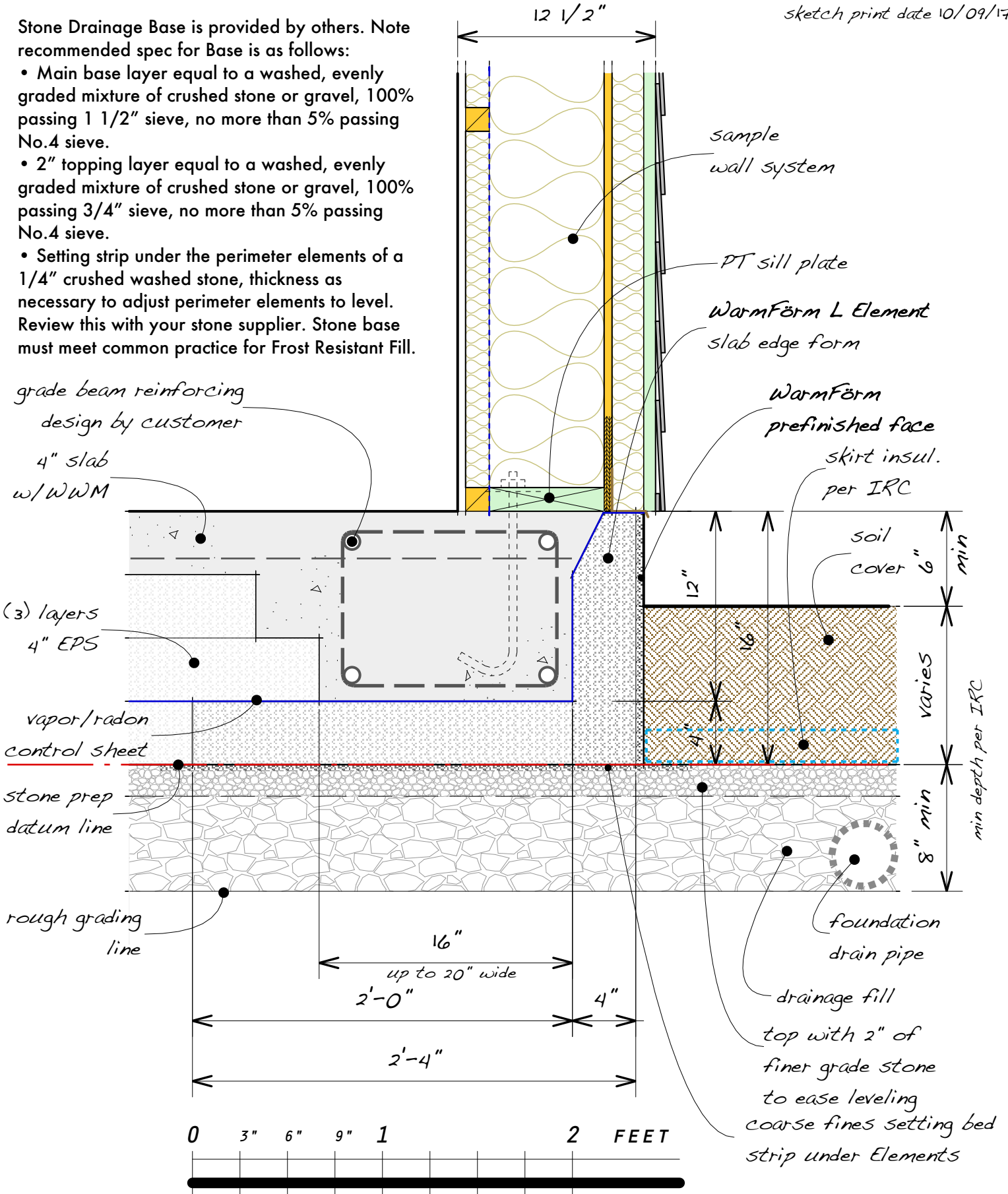


sketch print date 10/09/17

Stone Drainage Base is provided by others. Note recommended spec for Base is as follows:

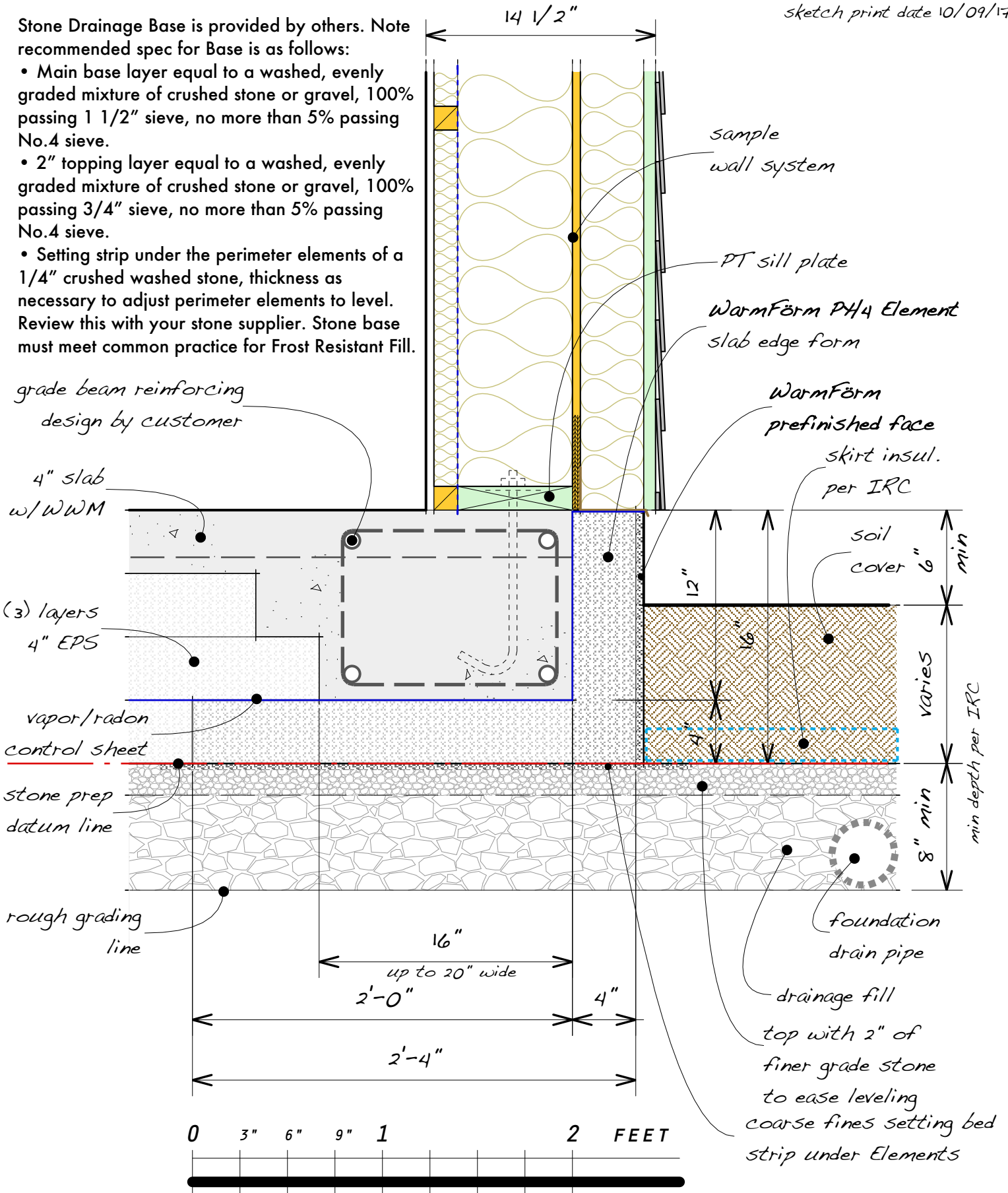
- Main base layer equal to a washed, evenly graded mixture of crushed stone or gravel, 100% passing 1 1/2" sieve, no more than 5% passing No.4 sieve.
- 2" topping layer equal to a washed, evenly graded mixture of crushed stone or gravel, 100% passing 3/4" sieve, no more than 5% passing No.4 sieve.
- Setting strip under the perimeter elements of a 1/4" crushed washed stone, thickness as necessary to adjust perimeter elements to level. Review this with your stone supplier. Stone base must meet common practice for Frost Resistant Fill.



sketch print date 10/09/17

Stone Drainage Base is provided by others. Note recommended spec for Base is as follows:

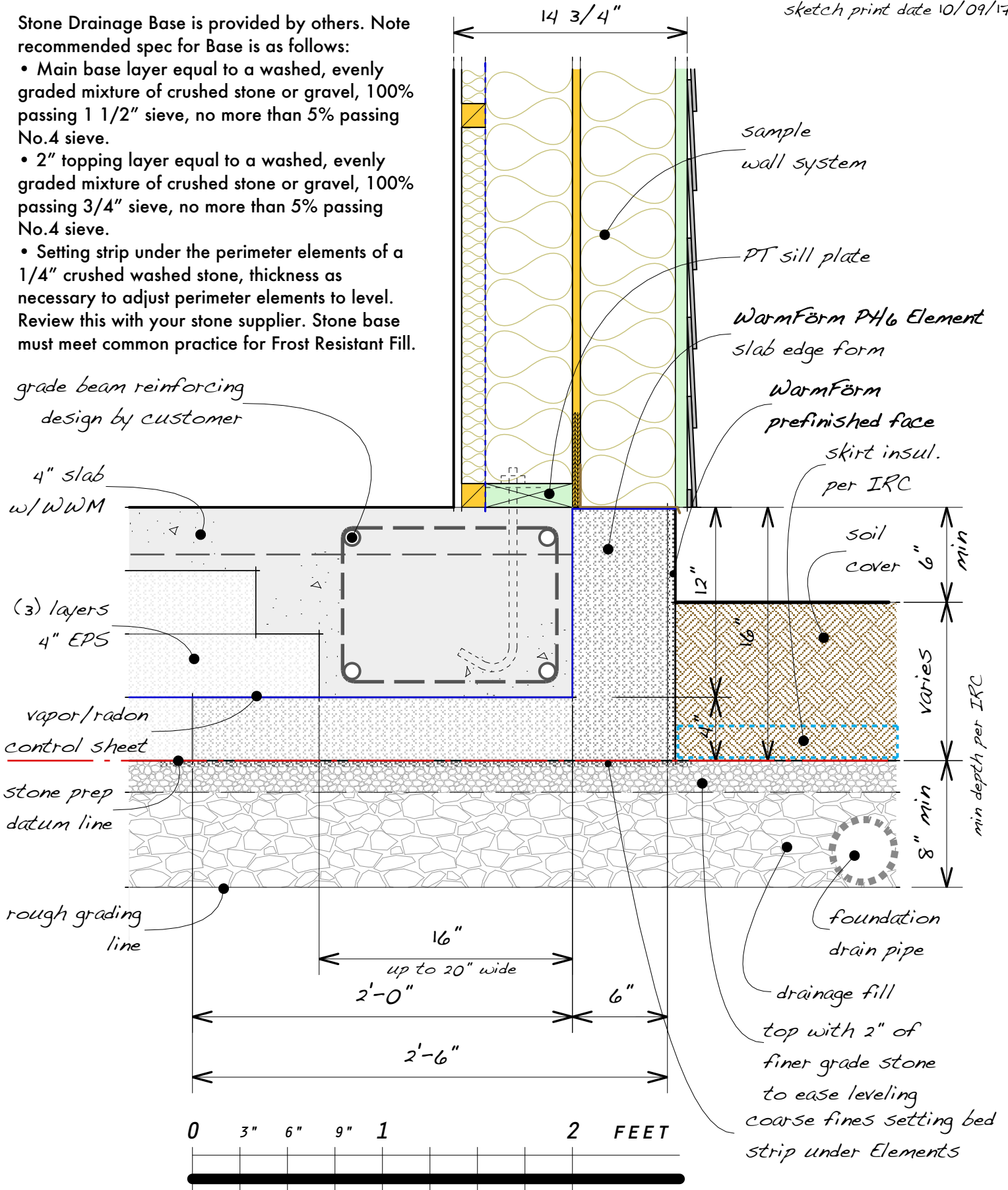
- Main base layer equal to a washed, evenly graded mixture of crushed stone or gravel, 100% passing 1 1/2" sieve, no more than 5% passing No.4 sieve.
- 2" topping layer equal to a washed, evenly graded mixture of crushed stone or gravel, 100% passing 3/4" sieve, no more than 5% passing No.4 sieve.
- Setting strip under the perimeter elements of a 1/4" crushed washed stone, thickness as necessary to adjust perimeter elements to level. Review this with your stone supplier. Stone base must meet common practice for Frost Resistant Fill.



sketch print date 10/09/17

Stone Drainage Base is provided by others. Note recommended spec for Base is as follows:

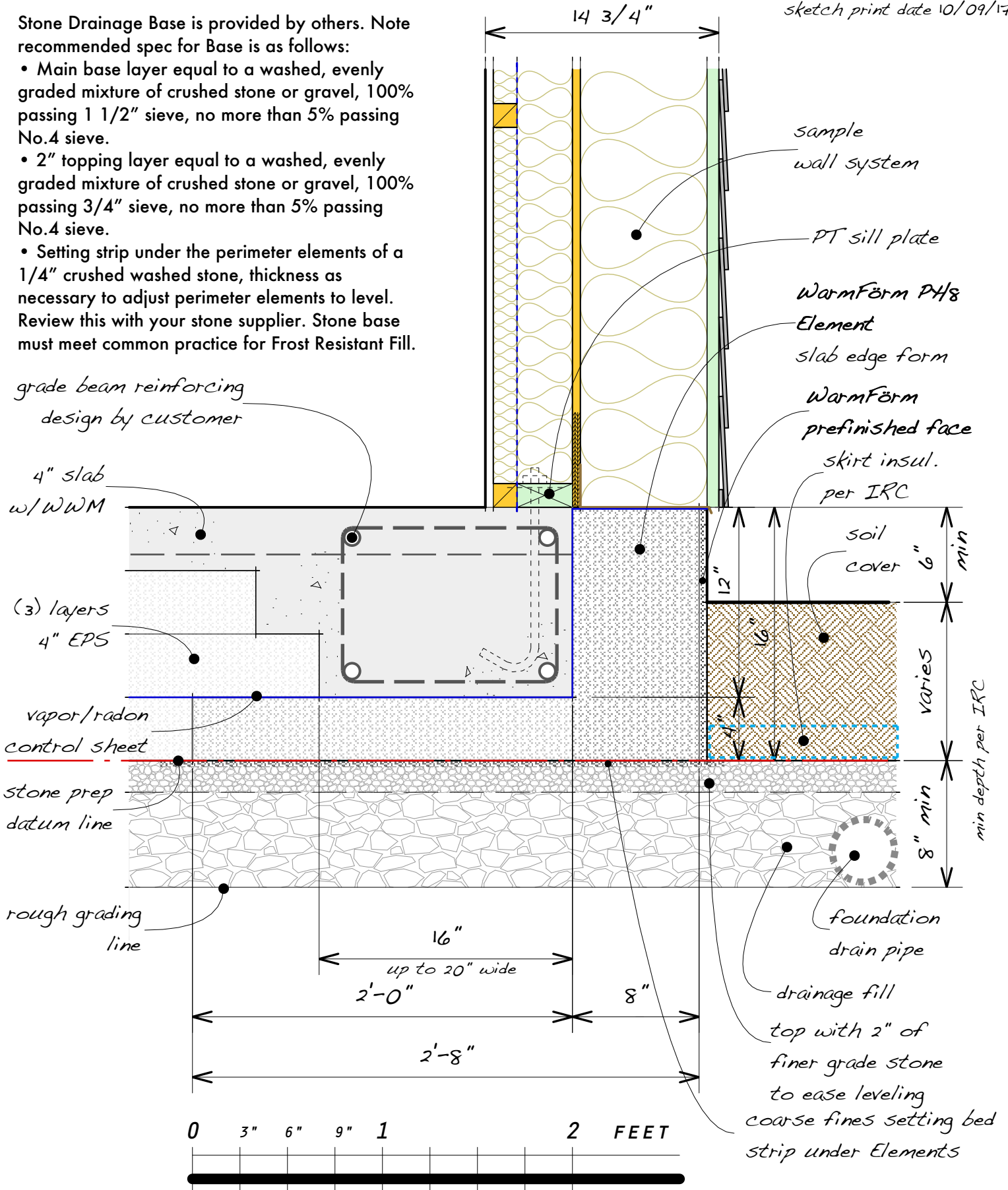
- Main base layer equal to a washed, evenly graded mixture of crushed stone or gravel, 100% passing 1 1/2" sieve, no more than 5% passing No.4 sieve.
- 2" topping layer equal to a washed, evenly graded mixture of crushed stone or gravel, 100% passing 3/4" sieve, no more than 5% passing No.4 sieve.
- Setting strip under the perimeter elements of a 1/4" crushed washed stone, thickness as necessary to adjust perimeter elements to level. Review this with your stone supplier. Stone base must meet common practice for Frost Resistant Fill.



sketch print date 10/09/17

Stone Drainage Base is provided by others. Note recommended spec for Base is as follows:

- Main base layer equal to a washed, evenly graded mixture of crushed stone or gravel, 100% passing 1 1/2" sieve, no more than 5% passing No.4 sieve.
- 2" topping layer equal to a washed, evenly graded mixture of crushed stone or gravel, 100% passing 3/4" sieve, no more than 5% passing No.4 sieve.
- Setting strip under the perimeter elements of a 1/4" crushed washed stone, thickness as necessary to adjust perimeter elements to level. Review this with your stone supplier. Stone base must meet common practice for Frost Resistant Fill.



For other components shown in this drawing refer to WarmForm Typical Section Details.

- Stone Curb may be positioned as needed to form grade beams in required widths.
- Center fill must be lifted in and vibrated to compaction level specified by foundation engineer. Recommended that backfill be complete before compaction, to resist spreading of forms.
- Anchor the Stone Curb in place with WarmForm Foam Spikes or other landscape spike.
- Mitre or trim corners in field to layout inside edges of grade beams.

